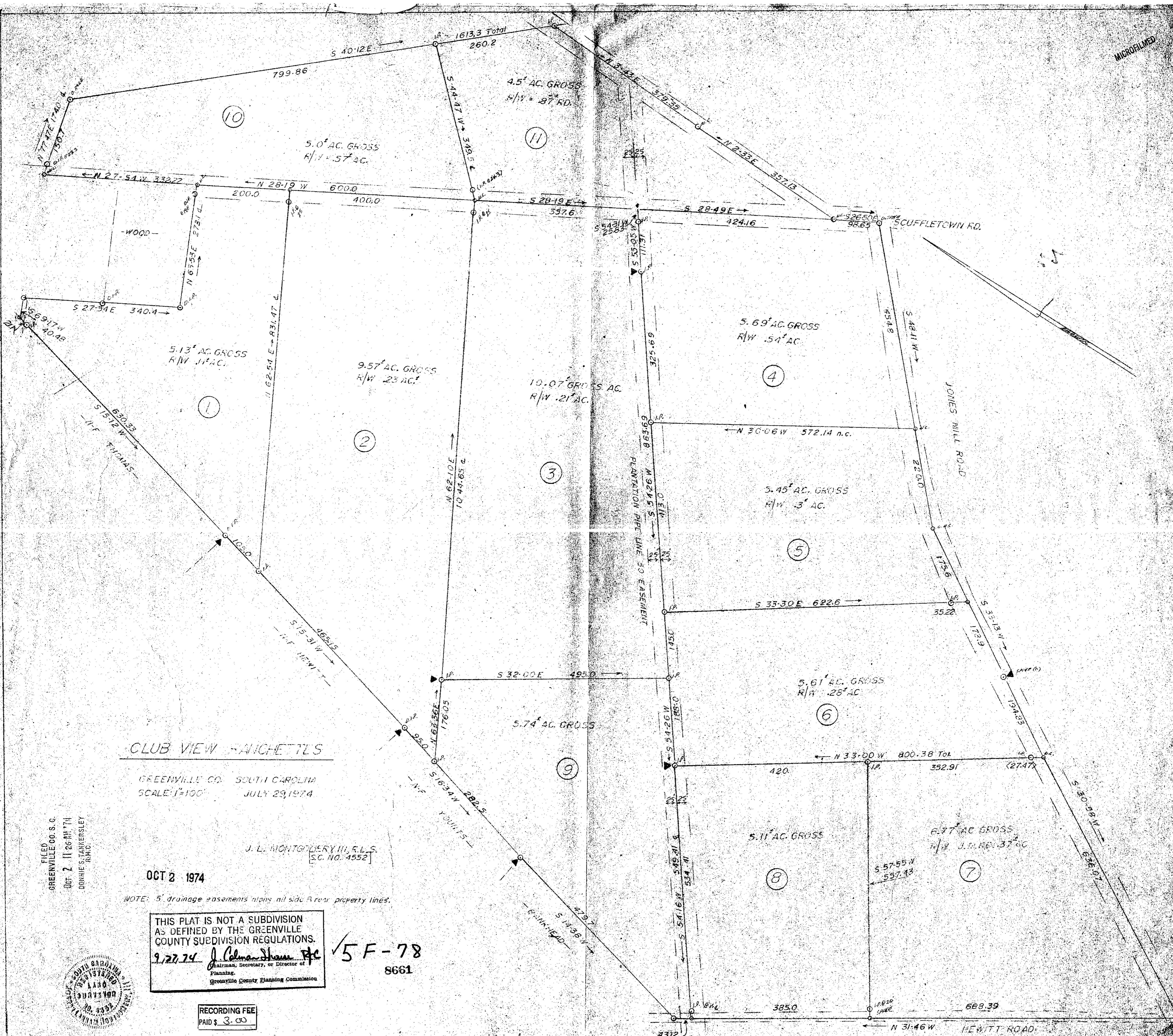


MICROFILMED



CLUB VIEW - ANCHETTLES

GREENVILLE CO. SOUTH CAROLINA  
SCALE: 1"=100' JULY 29, 1974

J. L. MONTGOMERY III, R.L.S.  
[S.C. NO. 4552]

OCT 2 1974

NOTE: 5' drainage easements along all side & rear property lines.

THIS PLAT IS NOT A SUBDIVISION  
AS DEFINED BY THE GREENVILLE  
COUNTY SUBDIVISION REGULATIONS.  
9.27.74 J. Colman Shaw, Jr.  
Chairman, Secretary, or Director of  
Planning.  
Greenville County Planning Commission

5 F - 78  
8661

RECORDING FEE  
PAID \$ 3.00

FILED  
GREENVILLE CO. S. C.  
OCT 7 11 26 AM '74  
DORRIS S. TARKERSLEY  
R.M.C.

